

PE Anti-Human CD29 (integrin β 1) Antibody

Catalog Number:	107217, 107218
Size:	25 tests, 100 tests
Target Name:	CD29, Integrin β 1 chain, VLA- β chain, gpIIa, ITGB1
Regulatory Status:	RUO

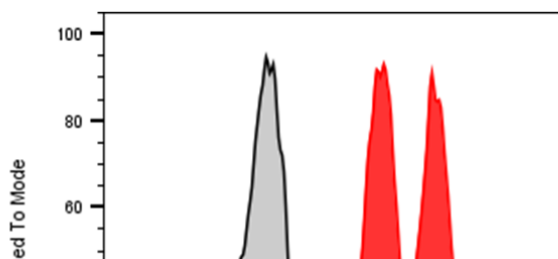
PRODUCT DETAILS

Clone:	K20
Application:	Flow Cytometry
Reactivity:	Human
Format:	PE
Isotype:	Mouse IgG2a
Antibody Type:	Monoclonal
Formulation:	Phosphate-buffered solution, pH 7.2, containing 0.09% sodium azide and 0.2% (w/v) BSA
Protein Concentration:	Supplied at a lot-specific concentration.
Storage&Handling:	The antibody solution should be stored undiluted between 2°C and 8°C, and protected from prolonged exposure to light. Do not freeze.
Recommended Usage:	For flow cytometric staining, it is recommended to use 5 μ L of this reagent per 0.5-1.0 million cells in a 100 μ L volume. Optimal reagent performance should be determined by titration for each specific application.
Excitation Laser:	Blue Laser (488 nm) Green/Yellow laser (532/561nm)

BACKGROUND INFORMATION

Integrin beta-1 (ITGB1), also known as CD29, is a cell surface receptor that in humans is encoded by the ITGB1 gene.[5] This integrin associates with integrin alpha 1 and integrin alpha 2 to form integrin complexes which function as collagen receptors. Integrin beta 1 is expressed as at least four different isoforms. In cardiac muscle and skeletal muscle, the integrin beta-1D isoform is specifically expressed, and localizes to costameres, where it aids in the lateral force transmission from the Z-discs to the extracellular matrix. Abnormal levels of integrin beta-1D have been found in limb girdle muscular dystrophy and polyneuropathy.

PRODUCT DATA



Human peripheral blood lymphocytes stained with either PE Anti-Human CD29 Clone K20 (color-filled histogram) or an

isotype control (gray histogram).

This product is supplied subject to the terms and conditions at www.innocyto.com/web/terms.php and may only be used as provided in the stated terms. Products are for Research Use Only.