

## APC Anti-Human CD2 Antibody

<b>Catalog Number:</b>	109909, 109910
<b>Size:</b>	25 tests, 100 tests
<b>Target Name:</b>	CD2, LFA-2, SRBC-R
<b>Regulatory Status:</b>	RUO

### PRODUCT DETAILS

---

<b>Clone:</b>	OKT11
<b>Application:</b>	Flow Cytometry
<b>Reactivity:</b>	Human
<b>Format:</b>	APC
<b>Isotype:</b>	Mouse IgG1
<b>Antibody Type:</b>	Monoclonal
<b>Formulation:</b>	Phosphate-buffered solution, pH 7.2, containing 0.09% sodium azide and 0.2% (w/v) BSA
<b>Protein Concentration:</b>	Supplied at a lot-specific concentration.
<b>Storage&amp;Handling:</b>	The antibody solution should be stored undiluted between 2°C and 8°C, and protected from prolonged exposure to light. Do not freeze.
<b>Recommended Usage:</b>	For flow cytometric staining, it is recommended to use 5 uL of this reagent per 0.5-1.0 million cells in a 100 µL volume. Optimal reagent performance should be determined by titration for each specific application.
<b>Excitation Laser:</b>	Red Laser (633 nm)

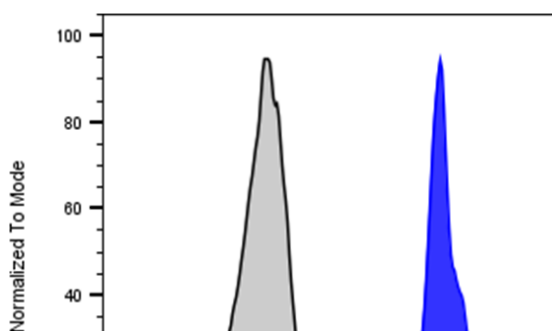
### BACKGROUND INFORMATION

---

CD2 is a ~45-50 kDa type I transmembrane glycoprotein and a member of the immunoglobulin superfamily. It is expressed on T lymphocytes, thymocytes, natural killer (NK) cells, and some thymic B cell subsets. CD2 is one of the earliest T-cell markers and serves as a cell surface receptor crucial for cell-cell adhesion, T-cell activation, and immune signaling.

### PRODUCT DATA

---



Human peripheral blood lymphocytes stained with either APC Anti-Human CD2 Clone OKT11 (color-filled histogram) or an isotype control (gray histogram).