

iF647 Anti-Human CD56 (NCAM) Antibody

Catalog Number:	111003, 111004
Size:	25 tests, 100 tests
Target Name:	CD56, Leu-19, NKH1
Regulatory Status:	RUO

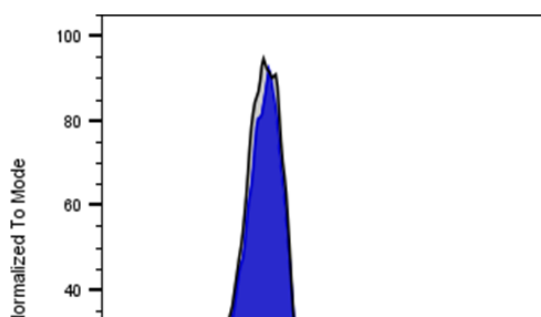
PRODUCT DETAILS

Clone:	CD56H
Application:	Flow Cytometry
Reactivity:	Human
Format:	iF647
Isotype:	Mouse IgG1
Antibody Type:	Monoclonal
Formulation:	Phosphate-buffered solution, pH 7.2, containing 0.09% sodium azide and 0.2% (w/v) BSA
Protein Concentration:	Supplied at a lot-specific concentration.
Storage&Handling:	The antibody solution should be stored undiluted between 2°C and 8°C, and protected from prolonged exposure to light. Do not freeze.
Recommended Usage:	For flow cytometric staining, it is recommended to use 5 uL of this reagent per 0.5-1.0 million cells in a 100 µL volume. Optimal reagent performance should be determined by titration for each specific application.
Excitation Laser:	Red Laser (633 nm)

BACKGROUND INFORMATION

Neural cell adhesion molecule (NCAM), also called CD56. It is a member of the Ig superfamily. The 140 kD isoform is expressed on NK cells and NK-T cells. CD56 is also expressed in the brain (cerebellum and cortex) and at neuromuscular junctions. Certain large granular lymphocyte (LGL) leukemias, small-cell lung carcinomas, neuronal derived tumors, myelomas, and myeloid leukemias also express CD56. CD56 plays a role in homophilic and heterophilic adhesion via binding to itself or heparin sulfate.

PRODUCT DATA



Human peripheral blood lymphocytes was stained with iF647 Anti-Human CD56 clone CD56H (color-filled histogram) or an isotype control (gray histogram).