

iF647 Anti-Human CD196 (CCR6) Antibody

| | |
|---------------------------|-----------------------------------|
| Catalog Number: | 111103, 111104 |
| Size: | 25 tests, 100 tests |
| Target Name: | CD196, CCR6, DRY-6, STRL22,CKR-L3 |
| Regulatory Status: | RUO |

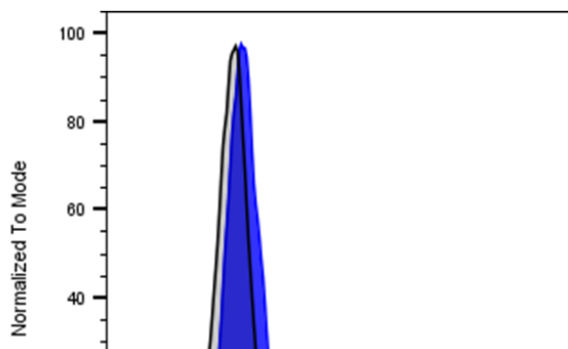
PRODUCT DETAILS

| | |
|-------------------------------|--|
| Clone: | 196AM1 |
| Application: | Flow Cytometry |
| Reactivity: | Human |
| Format: | iF647 |
| Isotype: | Mouse IgG1 |
| Antibody Type: | Monoclonal |
| Formulation: | Phosphate-buffered solution, pH 7.2, containing 0.09% sodium azide and 0.2% (w/v) BSA |
| Protein Concentration: | Supplied at a lot-specific concentration. |
| Storage&Handling: | The antibody solution should be stored undiluted between 2°C and 8°C, and protected from prolonged exposure to light. Do not freeze. |
| Recommended Usage: | For flow cytometric staining, it is recommended to use 5 uL of this reagent per 0.5-1.0 million cells in a 100 µL volume. Optimal reagent performance should be determined by titration for each specific application. |
| Excitation Laser: | Red Laser (633 nm) |

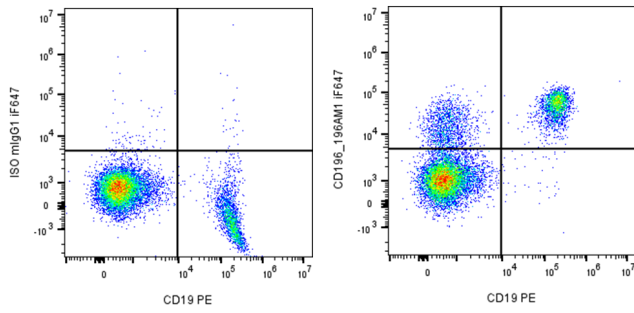
BACKGROUND INFORMATION

CCR6 is a seven-transmembrane chemokine receptor expressed on immature dendritic cells, B cells, and memory T cells. Its primary ligand, CCL20 (MIP-3 α), regulates immune cell migration, B cell differentiation, and Th17 recruitment and is implicated in inflammatory diseases such as rheumatoid arthritis and inflammatory bowel disease.

PRODUCT DATA



Human peripheral blood lymphocytes was stained with iF647 Anti-Human CD196 clone 196AM1 (color-filled histogram) or an isotype control (gray histogram).



Human peripheral blood lymphocytes was co-stained with PE anti-human CD19 and either iF647 Anti-Human CD196 clone 196AM1 (right panel) or an isotype control (left panel).

This product is supplied subject to the terms and conditions at www.innocyto.com/web/terms.php and may only be used as provided in the stated terms. Products are for Research Use Only.