

iF647 Anti-mouse CD28 Antibody

Catalog Number:	203002, 203003
Size:	25 tests, 100 tests
Target Name:	CD28, Tp44, T44
Regulatory Status:	RUO

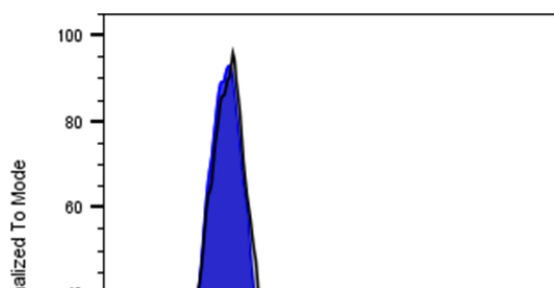
PRODUCT DETAILS

Clone:	37.51
Application:	Flow Cytometry
Reactivity:	Mouse
Format:	iF647
Isotype:	Syrian Hamster IgG
Antibody Type:	Monoclonal
Formulation:	Phosphate-buffered solution, pH 7.2, containing 0.09% sodium azide and 0.2% (w/v) BSA
Protein Concentration:	Supplied at a lot-specific concentration.
Storage&Handling:	The antibody solution should be stored undiluted between 2°C and 8°C, and protected from prolonged exposure to light. Do not freeze.
Recommended Usage:	For flow cytometric staining, it is recommended to use 5 uL of this reagent per 0.5-1.0 million cells in a 100 µL volume. Optimal reagent performance should be determined by titration for each specific application.
Excitation Laser:	Red Laser (633 nm)

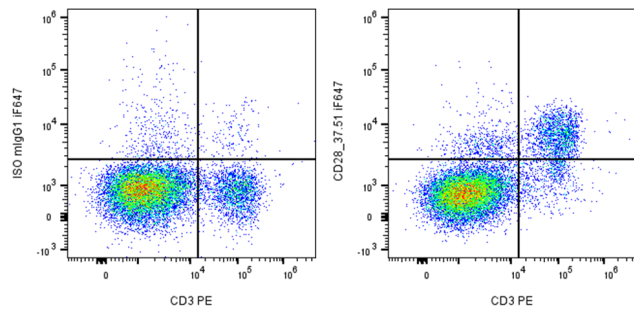
BACKGROUND INFORMATION

CD28 (Cluster of Differentiation 28) is one of the proteins expressed on T cells that provide co-stimulatory signals required for T cell activation and survival. T cell stimulation through CD28 in addition to the T-cell receptor (TCR) can provide a potent signal for the production of various interleukins (IL-6 in particular). CD28 is the only B7 receptor constitutively expressed on naive T cells. Association of the TCR of a naive T cell with MHC antigen complex without CD28:B7 interaction results in a T cell that is anergic.

PRODUCT DATA



Mouse splenocytes were stained with iF647 Anti-Mouse CD28 clone 37.51 (color-filled histogram) or an isotype control (gray histogram) .



Mouse splenocytes were co-stained with PE anti-mouse CD3 and either iF647 Anti-Mouse CD28 clone 37.51 (right panel) or an isotype control (left panel) .