

## iF647 Anti-mouse CD28 Antibody

<b>Catalog Number:</b>	203002, 203003
<b>Size:</b>	25 tests, 100 tests
<b>Target Name:</b>	CD28, Tp44, T44
<b>Regulatory Status:</b>	RUO

### PRODUCT DETAILS

---

<b>Clone:</b>	37.51
<b>Application:</b>	Flow Cytometry
<b>Reactivity:</b>	Mouse
<b>Format:</b>	iF647
<b>Isotype:</b>	Syrian Hamster IgG
<b>Antibody Type:</b>	Monoclonal
<b>Formulation:</b>	Phosphate-buffered solution, pH 7.2, containing 0.09% sodium azide and 0.2% (w/v) BSA
<b>Protein Concentration:</b>	Supplied at a lot-specific concentration.
<b>Storage&amp;Handling:</b>	The antibody solution should be stored undiluted between 2°C and 8°C, and protected from prolonged exposure to light. Do not freeze.
<b>Recommended Usage:</b>	For flow cytometric staining, it is recommended to use 5 uL of this reagent per 0.5-1.0 million cells in a 100 µL volume. Optimal reagent performance should be determined by titration for each specific application.
<b>Excitation Laser:</b>	Red Laser (633 nm)

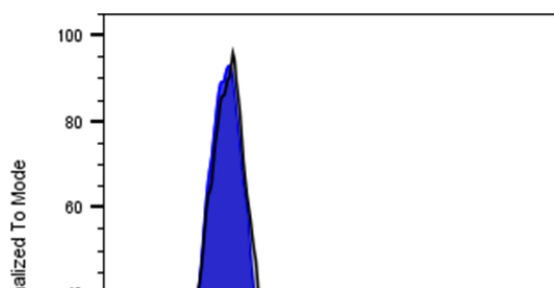
### BACKGROUND INFORMATION

---

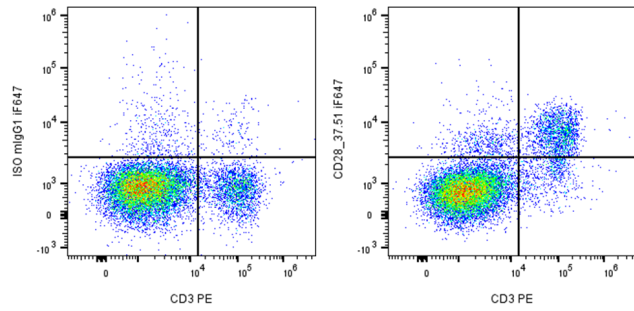
CD28 (Cluster of Differentiation 28) is one of the proteins expressed on T cells that provide co-stimulatory signals required for T cell activation and survival. T cell stimulation through CD28 in addition to the T-cell receptor (TCR) can provide a potent signal for the production of various interleukins (IL-6 in particular). CD28 is the only B7 receptor constitutively expressed on naive T cells. Association of the TCR of a naive T cell with MHC antigen complex without CD28:B7 interaction results in a T cell that is anergic.

### PRODUCT DATA

---



Mouse splenocytes were stained with iF647 Anti-Mouse CD28 clone 37.51 (color-filled histogram) or an isotype control (gray histogram) .



Mouse splenocytes were co-stained with PE anti-mouse CD3 and either iF647 Anti-Mouse CD28 clone 37.51 (right panel) or an isotype control (left panel) .