

FITC Anti-human/mouse T-bet Antibody

| | |
|---------------------------|---|
| Catalog Number: | 111507, 111508 |
| Size: | 25 tests, 100 tests |
| Target Name: | T-bet, T box 21, T-box expressed in T cells |
| Regulatory Status: | RUO |

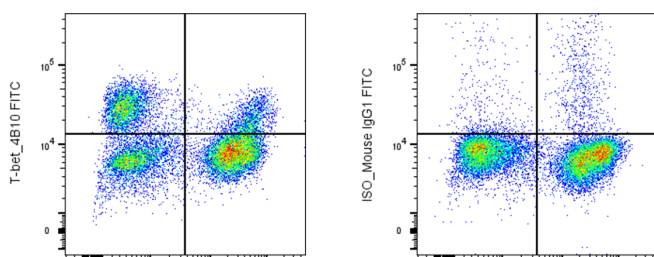
PRODUCT DETAILS

| | |
|-------------------------------|--|
| Clone: | 4B10 |
| Application: | Flow Cytometry |
| Reactivity: | Human, Mouse |
| Format: | FITC |
| Isotype: | Mouse IgG1 |
| Antibody Type: | Monoclonal |
| Formulation: | Phosphate-buffered solution, pH 7.2, containing 0.09% sodium azide and 0.2% (w/v) BSA |
| Protein Concentration: | Supplied at a lot-specific concentration. |
| Storage&Handling: | The antibody solution should be stored undiluted between 2°C and 8°C, and protected from prolonged exposure to light. Do not freeze. |
| Recommended Usage: | For flow cytometric staining, it is recommended to use 5 uL of this reagent per 0.5-1.0 million cells in a 100 µL volume. Optimal reagent performance should be determined by titration for each specific application. FITC has an excitation max at 493 nm and an emission max at 525 nm. |
| Excitation Laser: | Blue Laser (488 nm) |
| Isotype Control: | 301415 |

BACKGROUND INFORMATION

T-bet (TBX21) is a T-box transcription factor that plays a central role in the differentiation and function of Th1 CD4⁺ T cells in both humans and mice. Its expression is induced by IFN- γ and it directly regulates the transcription of IFN- γ , IL-12 receptor β , and IL-2 through modulation of chromatin accessibility. Loss of T-bet impairs Th1 lineage commitment, while ectopic expression promotes Th1 polarization. Beyond T cells, T-bet also contributes to B cell class-switch recombination. Due to its conserved function across species, T-bet is a key regulator of cell-mediated immunity and inflammatory responses.

PRODUCT DATA



Human peripheral blood lymphocytes were stained with APC

Anti-human CD3 clone OKT3 and intracellular stained with either FITC Anti-human/mouse T-bet antibody clone 4B10 (left panel) or an isotype control (right panel)

This product is supplied subject to the terms and conditions at www.innocyto.com/web/terms.php and may only be used as provided in the stated terms. Products are for Research Use Only.