

iF488 Anti-His tag Antibody

Catalog Number:	300705, 300706
Size:	25 tests, 100 tests
Target Name:	His Tag, histidine-tag
Regulatory Status:	RUO

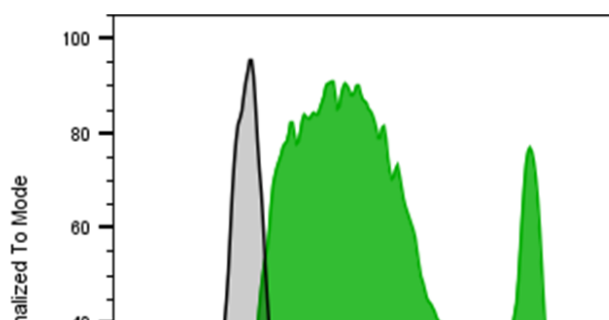
PRODUCT DETAILS

Clone:	1005AB
Application:	Flow Cytometry
Reactivity:	His-tag, All Species Expected
Format:	iF488
Isotype:	Rabbit IgG
Antibody Type:	Monoclonal
Formulation:	Phosphate-buffered solution, pH 7.2, containing 0.09% sodium azide and 0.2% (w/v) BSA
Protein Concentration:	Supplied at a lot-specific concentration.
Storage&Handling:	The antibody solution should be stored undiluted between 2°C and 8°C, and protected from prolonged exposure to light. Do not freeze.
Recommended Usage:	For flow cytometric staining, it is recommended to use 5 uL of this reagent per 0.5-1.0 million cells in a 100 µL volume. Optimal reagent performance should be determined by titration for each specific application.
Excitation Laser:	Blue Laser (488 nm)
Isotype Control:	301803

BACKGROUND INFORMATION

This antibody is raised against a synthetic 6xHis peptide. It can be used for Western blotting to detect His-tagged proteins (6xHis or more) at the N-terminus, C-terminus, or within the protein sequence. It is also suitable for flow cytometry or immunofluorescent staining of His-tagged proteins.

PRODUCT DATA



Multi-tag (including His) transmembrane protein transfected CHO cells were stained with either iF488 Anti-His antibody clone 1005AB (color-filled histogram) or an isotype control

(gray histogram).

This product is supplied subject to the terms and conditions at www.innocyto.com/web/terms.php and may only be used as provided in the stated terms. Products are for Research Use Only.