

## APC Anti-His tag Antibody

<b>Catalog Number:</b>	300709, 300710
<b>Size:</b>	25 tests, 100 tests
<b>Target Name:</b>	His Tag, histidine-tag
<b>Regulatory Status:</b>	RUO

### PRODUCT DETAILS

---

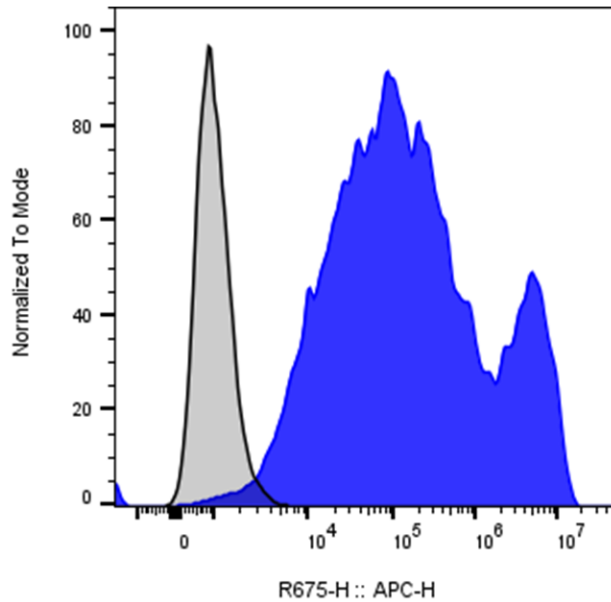
<b>Clone:</b>	1005AB
<b>Application:</b>	Flow Cytometry
<b>Reactivity:</b>	His-tag, All Species Expected
<b>Format:</b>	APC
<b>Isotype:</b>	Rabbit IgG
<b>Antibody Type:</b>	Monoclonal
<b>Formulation:</b>	Phosphate-buffered solution, pH 7.2, containing 0.09% sodium azide and 0.2% (w/v) BSA
<b>Protein Concentration:</b>	Supplied at a lot-specific concentration.
<b>Storage&amp;Handling:</b>	The antibody solution should be stored undiluted between 2°C and 8°C, and protected from prolonged exposure to light. Do not freeze.
<b>Recommended Usage:</b>	For flow cytometric staining, it is recommended to use 5 uL of this reagent per 0.5-1.0 million cells in a 100 µL volume. Optimal reagent performance should be determined by titration for each specific application. APC has an excitation max at 650 nm and an emission max at 660 nm.
<b>Excitation Laser:</b>	Red Laser (633 nm)
<b>Isotype Control:</b>	301813

### BACKGROUND INFORMATION

---

This antibody is raised against a synthetic 6xHis peptide. It can be used for Western blotting to detect His-tagged proteins (6xHis or more) at the N-terminus, C-terminus, or within the protein sequence. It is also suitable for flow cytometry or immunofluorescent staining of His-tagged proteins.

## PRODUCT DATA



Multi-tag (including His) transmembrane protein transfected CHO cells were stained with either APC Anti-His antibody clone 1005AB (color-filled histogram) or an isotype control (gray histogram).

This product is supplied subject to the terms and conditions at [www.innocyto.com/web/terms.php](http://www.innocyto.com/web/terms.php) and may only be used as provided in the stated terms. Products are for Research Use Only.