

PE Anti-c-Myc Antibody

Catalog Number:	300809, 300810
Size:	25 tests, 100 tests
Target Name:	Myc tag, Myc epitope
Regulatory Status:	RUO

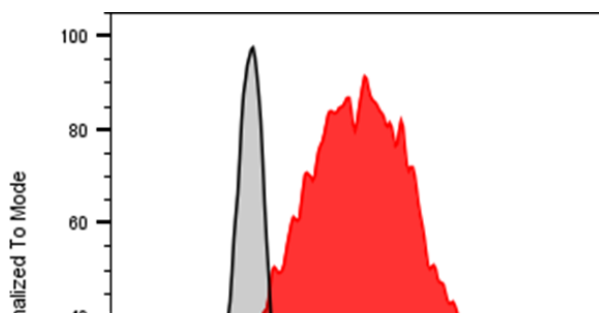
PRODUCT DETAILS

Clone:	9E10
Application:	Flow Cytometry
Reactivity:	Myc tag, All Species Expected
Format:	PE
Isotype:	Mouse IgG1
Antibody Type:	Monoclonal
Formulation:	Phosphate-buffered solution, pH 7.2, containing 0.09% sodium azide and 0.2% (w/v) BSA
Protein Concentration:	Supplied at a lot-specific concentration.
Storage&Handling:	The antibody solution should be stored undiluted between 2°C and 8°C, and protected from prolonged exposure to light. Do not freeze.
Recommended Usage:	For flow cytometric staining, it is recommended to use 5 uL of this reagent per 0.5-1.0 million cells in a 100 µL volume. Optimal reagent performance should be determined by titration for each specific application. PE has an excitation max at 565 nm and an emission max at 575 nm.
Excitation Laser:	Blue Laser (488 nm) Green/Yellow laser (532/561nm)
Isotype Control:	301407

BACKGROUND INFORMATION

The 9E10 monoclonal antibody was generated by immunizing mice with a synthetic peptide corresponding to amino acids 408-438 (E E Q K L I S E E D L L R K R R E Q L K H K L E Q L R N S C A) of the human c-Myc protein. It specifically recognizes the epitope EQKLISEEDL, a defined sequence within the human c-Myc protein

PRODUCT DATA



Multi-tag (including c-Myc) transmembrane protein transfected CHO cells were stained with either PE Anti-c-Myc antibody clone 9E10 (color-filled histogram) or an isotype control (gray

histogram).

This product is supplied subject to the terms and conditions at www.innocyto.com/web/terms.php and may only be used as provided in the stated terms. Products are for Research Use Only.