

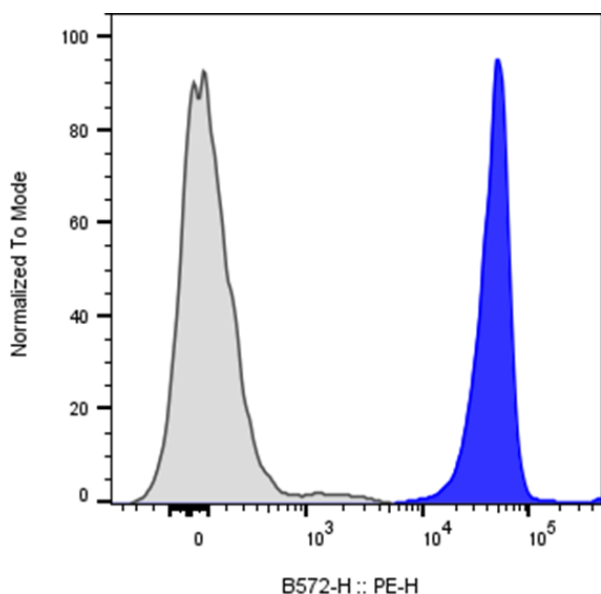
PE Streptavidin

Catalog Number:	306201, 306202
Size:	25 ug, 100 ug
Target Name:	Streptavidin
Regulatory Status:	RUO

PRODUCT DETAILS

Application:	Flow Cytometry
Format:	PE
Formulation:	Phosphate-buffered solution, pH 7.2, containing 0.09% sodium azide and 0.2% (w/v) BSA
Protein Concentration:	0.5 mg/mL
Recommended Usage:	For flow cytometric staining, it is recommended to use less than 0.1 ug of this reagent per 0.5-1.0 million cells in a 100 μ L volume. Optimal reagent performance should be determined by titration for each specific application. PE has an excitation max at 565 nm and an emission max at 575 nm.
Excitation Laser:	Blue Laser (488 nm) Green/Yellow laser (532/561nm)

PRODUCT DATA



Human peripheral blood lymphocytes stained with biotinylated anti-human CD45 clone HI30 (blue histogram) or an isotype control (gray histogram), followed by PE Streptavidin.