

## iF647 Anti-Mouse H-2 Antibody

<b>Catalog Number:</b>	200307, 200308
<b>Size:</b>	25 tests, 100 tests
<b>Target Name:</b>	H-2, major histocompatibility complex (MHC) H-2
<b>Regulatory Status:</b>	RUO

### PRODUCT DETAILS

---

<b>Clone:</b>	M1/42
<b>Application:</b>	Flow Cytometry
<b>Reactivity:</b>	Mouse
<b>Format:</b>	iF647
<b>Isotype:</b>	Rat IgG2a
<b>Antibody Type:</b>	Monoclonal
<b>Formulation:</b>	Phosphate-buffered solution, pH 7.2, containing 0.09% sodium azide and 0.2% (w/v) BSA
<b>Protein Concentration:</b>	Supplied at a lot-specific concentration.
<b>Storage and Handling:</b>	The antibody solution should be stored undiluted between 2°C and 8°C, and protected from prolonged exposure to light. Do not freeze.
<b>Recommended Usage:</b>	For flow cytometric staining, it is recommended to use 5 µL of this reagent per 0.5-1.0 million cells in a 100 µL volume. Optimal reagent performance should be determined by titration for each specific application. iF647 has an excitation max at 656 nm and an emission max at 670 nm.
<b>Excitation Laser:</b>	Red Laser (633 nm)
<b>Isotype Control:</b>	300203

### BACKGROUND INFORMATION

---

The mouse H-2 complex is the murine major histocompatibility complex (MHC), a highly polymorphic genomic region that plays a central role in adaptive immunity. Encoded on mouse chromosome 17, the H-2 complex governs antigen presentation to T lymphocytes and is essential for immune recognition of pathogens, tumors, and transplanted tissues. Through regulated expression of MHC class I and class II molecules, the H-2 complex enables the immune system to distinguish self from non-self and to mount appropriate cellular immune responses.

Structurally, the H-2 complex is divided into several regions, most notably the class I (H-2K, H-2D, and in some strains H-2L), class II (I-A and I-E), and class III regions. Class I H-2 molecules are composed of a polymorphic heavy  $\alpha$  chain non-covalently associated with  $\beta$ 2-microglobulin, forming a peptide-binding groove that presents short endogenous peptides to CD8+ T cells. Class II H-2 molecules consist of polymorphic  $\alpha$  and  $\beta$  chains that together form a peptide-binding cleft for longer peptides derived from extracellular proteins, which are presented to CD4+ T cells. The class III region encodes several immune-related proteins, including

complement components and cytokines, rather than antigen-presenting molecules.

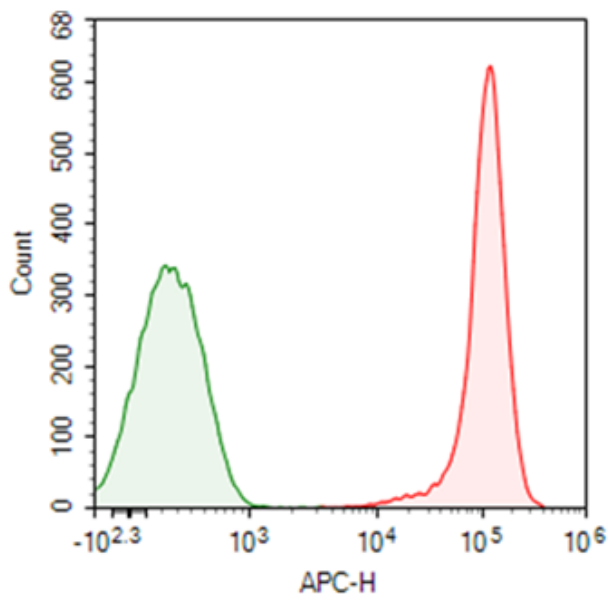
The primary ligands for H-2 class I and class II molecules are peptide antigens generated by intracellular or extracellular antigen-processing pathways, respectively. Class I molecules bind peptides typically 8-10 amino acids in length, derived from cytosolic proteins processed by the proteasome, while class II molecules present longer peptides derived from endosomal and lysosomal processing of exogenous antigens. These peptide-MHC complexes are recognized by T cell receptors, forming the basis of antigen-specific T cell activation.

Variation within the H-2 complex has profound effects on disease susceptibility and immune outcomes in mice. Specific H-2 haplotypes are associated with resistance or susceptibility to infectious agents, autoimmune diseases, and cancer in experimental models. H-2 compatibility is also a dominant determinant of graft rejection in transplantation studies, making the complex a critical factor in experimental immunology. Differences in peptide-binding preferences among H-2 alleles influence T cell repertoire selection and immune response strength.

In therapy and biomedical research, the H-2 complex is indispensable for the development and interpretation of mouse models of human disease. It shapes responses to vaccines, immunotherapies, and infectious challenges in preclinical studies. Understanding H-2-restricted antigen presentation is also essential for designing mouse tumor models, evaluating T cell-based therapies, and translating immunological findings from mice to humans, underscoring the H-2 complex's foundational role in immunology.

## PRODUCT DATA

---



Mouse splenocytes stained with iF647 Anti-Mouse H-2 clone M1\_42 (red histogram) or an isotype control (green histogram).

This product is supplied subject to the terms and conditions at [www.innocyto.com/web/terms.php](http://www.innocyto.com/web/terms.php) and may only be used as provided in the stated terms. Products are for Research Use Only.