

## Technical Data Sheet

### iF647 Anti-Human CD19

**Catalog Number:** 101203, 101204  
**Size:** 25 tests, 100 tests  
**Target Name:** CD19, B4, CVID3, MGC12802  
**Regulatory Status:** RUO

#### Product Details

---

**Clone:** 019AM2b  
**Application:** FC  
**Reactivity:** Human  
**Format:** iF647  
**Isotype:** Mouse IgG2b  
**Antibody Type:** Monoclonal  
**Formulation:** Phosphate-buffered solution, pH 7.2, containing 0.09% sodium azide and 0.2% (w/v) BSA  
**Protein Concentration:** Supplied at a lot-specific concentration.  
**Storage&Handling:** The antibody solution should be stored undiluted between 2°C and 8°C, and protected from prolonged exposure to light. Do not freeze.  
**Recommended Usage:** For flow cytometric staining, it is recommended to use 5 uL of this reagent per 0.5-1.0 million cells in a 100 µL volume. Optimal reagent performance should be determined by titration for each specific application.  
**Excitation Laser:** Red Laser (633 nm)  
**Release Date:** Aug-25

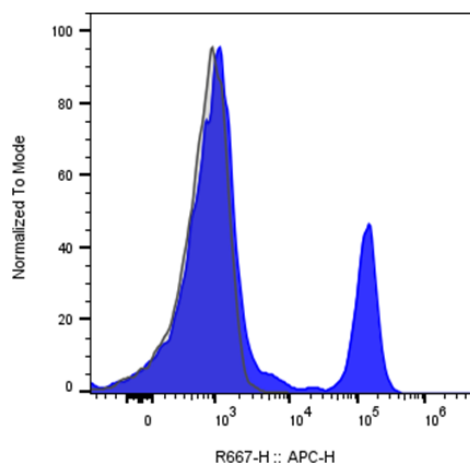
#### Background Information

---

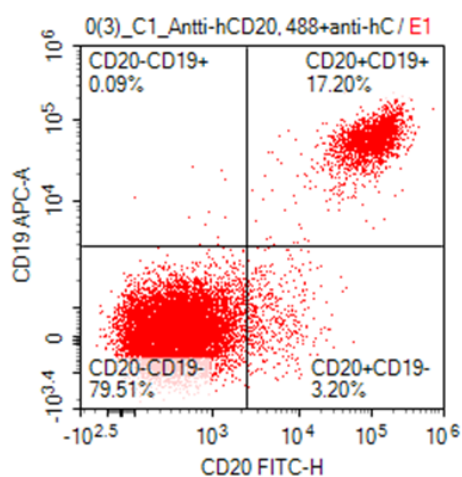
CD19 is expressed in all B lineage cells. CD19 is a 95 kd Type I transmembrane glycoprotein in the immunoglobulin superfamily (IgSF) with two extracellular C2-set Ig-like domains and a relatively large. CD19 plays two major roles in human B cells: on the one hand, it acts as an adaptor protein to recruit cytoplasmic signaling proteins to the membrane; on the other, it works within the CD19/CD21 complex to decrease the threshold for B cell receptor signaling pathways. Due to its presence on all B cells, it is a biomarker for B lymphocyte development, lymphoma diagnosis and can be utilized as a target for leukemia immunotherapies.

#### Product Data

---



Human peripheral blood lymphocytes was stained with iF647 Anti-Human CD19 clone 019AM2b (color-filled histogram) or an isotype control (gray histogram).



Human peripheral blood lymphocytes stained with iF488 anti-human CD20 clone 020AR1 and iF647 anti-human CD19 clone 019AM2b