

Technical Data Sheet

iF647 Anti-Mouse CD3

Catalog Number: 201107, 201108
Size: 25 tests, 100 tests
Target Name: CD3, T cell antigen receptor complex, T3
Regulatory Status: RUO

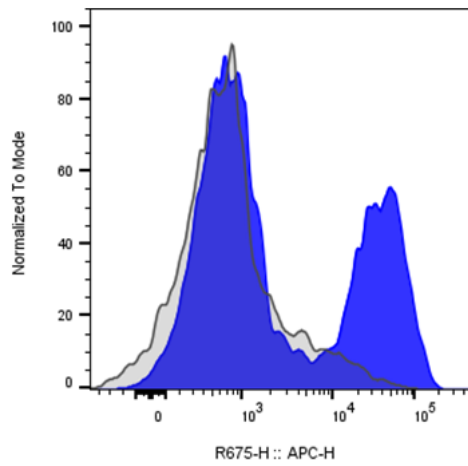
Product Details

Clone: 17A2-M2a
Application: FC
Reactivity: Mouse
Format: iF647
Isotype: Mouse IgG2a
Antibody Type: Monoclonal
Formulation: Phosphate-buffered solution, pH 7.2, containing 0.09% sodium azide and 0.2% (w/v) BSA
Protein Concentration: Supplied at a lot-specific concentration.
Storage and Handling: The antibody solution should be stored undiluted between 2°C and 8°C, and protected from prolonged exposure to light. Do not freeze.
Recommended Usage: For flow cytometric staining, it is recommended to use 5 µL of this reagent per 0.5-1.0 million cells in a 100 µL volume. Optimal reagent performance should be determined by titration for each specific application.
Excitation Laser: Red Laser (633 nm)

Background Information

CD3 (cluster of differentiation 3) is a protein complex and T cell co-receptor that is involved in activating both the cytotoxic T cell (CD8+ naive T cells) and T helper cells (CD4+ naive T cells). CD3 is a member of the Ig superfamily and primarily expressed on T cells, NK-T cells, and at different levels on thymocytes during T cell differentiation. CD3 is composed of CD3 ϵ , δ , γ and ζ chains. It forms a TCR complex by associating with TCR α/β or γ/δ chains. CD3 plays a critical role in TCR signal transduction, T cell activation, and antigen recognition by binding the peptide/MHC antigen complex

Product Data



Mouse splenocytes stained with either with iF647 Anti-mouse CD3 clone17A2 (blue histogram) or an isotype control (gray histogram).