

PE Anti-Mouse CD274 (PD-L1) Antibody

Catalog Number:	201307, 201308
Size:	25 tests, 100 tests
Target Name:	CD274, PD-L1, B7-H1
Regulatory Status:	RUO

PRODUCT DETAILS

Clone:	10F.9G2
Application:	Flow Cytometry
Reactivity:	Mouse
Format:	PE
Isotype:	Rat IgG2b
Antibody Type:	Monoclonal
Formulation:	Phosphate-buffered solution, pH 7.2, containing 0.09% sodium azide and 0.2% (w/v) BSA
Protein Concentration:	Supplied at a lot-specific concentration.
Storage and Handling:	The antibody solution should be stored undiluted between 2°C and 8°C, and protected from prolonged exposure to light. Do not freeze.
Recommended Usage:	For flow cytometric staining, it is recommended to use 5 µL of this reagent per 0.5-1.0 million cells in a 100 µL volume. Optimal reagent performance should be determined by titration for each specific application. PE has an excitation max at 565 nm and an emission max at 575 nm.
Excitation Laser:	Blue Laser (488 nm) Green/Yellow laser (532/561nm)
Isotype Control:	300305
RRID:	AB_3739040

BACKGROUND INFORMATION

Programmed death-ligand 1 (PD-L1), also known as CD274 or B7-H1, is a transmembrane protein that plays a pivotal role in immune regulation by modulating T cell activity. PD-L1 is expressed on a wide range of cells, including antigen-presenting cells, epithelial cells, and many tumor cells. Its primary function is to bind to its receptor, programmed cell death protein 1 (PD-1), located on activated T cells. This interaction delivers an inhibitory signal that reduces T cell proliferation, cytokine production, and cytotoxicity, thereby maintaining immune homeostasis and preventing autoimmunity. However, in pathological contexts such as cancer, PD-L1 expression allows tumor cells to evade immune attack, creating an immunosuppressive microenvironment.

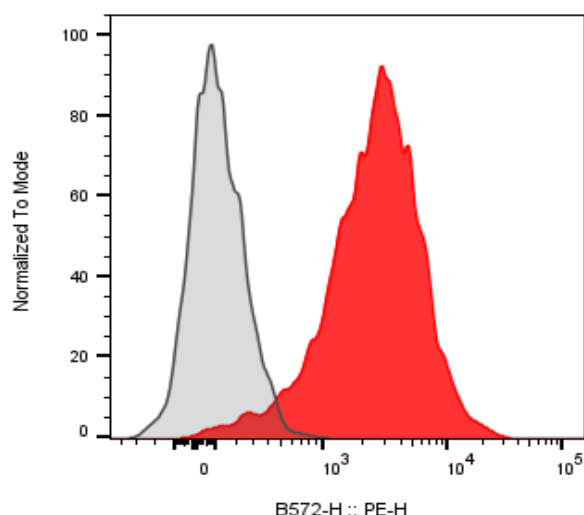
Structurally, PD-L1 is a type I transmembrane glycoprotein belonging to the B7 family of immune checkpoint molecules. The extracellular domain comprises two immunoglobulin-like regions—an IgV-like domain responsible for PD-1 binding and an IgC-like domain that stabilizes the molecule. The protein also contains a single transmembrane helix and a short cytoplasmic tail that lacks

classical signaling motifs but may interact with intracellular partners influencing its stability and localization. The PD-L1-PD-1 complex adopts a well-characterized interface where the IgV domains of both molecules interact in a way that blocks T cell receptor-mediated activation signaling.

The main ligands of PD-L1 are PD-1 and CD80 (B7-1). While PD-1 engagement results in T cell inhibition, interaction with CD80 may yield bidirectional signaling effects depending on the cellular context. PD-L1 can be induced by inflammatory cytokines such as interferon-gamma (IFN- γ), linking innate immune responses to immune checkpoint modulation.

PD-L1 plays a major role in numerous diseases. Overexpression of PD-L1 is a hallmark of many cancers, including lung, melanoma, renal, and breast cancers, where it contributes to immune escape. Therapeutically, blocking the PD-1/PD-L1 axis with immune checkpoint inhibitors has revolutionized cancer treatment. Drugs such as pembrolizumab, nivolumab, and atezolizumab disrupt this inhibitory pathway, restoring antitumor T cell function. Moreover, PD-L1 is being explored as both a predictive biomarker for immunotherapy response and a target for novel therapies, including bispecific antibodies and CAR-T cells aimed at enhancing immune-mediated tumor clearance.

PRODUCT DATA



Mouse splenocytes stained with either PE Anti-Mouse PD-L1 clone 10F.9G2 PE (color-filled histogram) or an isotype control (gray histogram).

This product is supplied subject to the terms and conditions at www.innocyto.com/web/terms.php and may only be used as provided in the stated terms. Products are for Research Use Only.