

## Anti-c-Myc Antibody

<b>Catalog Number:</b>	300801, 300802
<b>Size:</b>	50 ug, 200 ug
<b>Target Name:</b>	Myc tag, Myc epitope
<b>Regulatory Status:</b>	RUO

### PRODUCT DETAILS

---

<b>Clone:</b>	9E10
<b>Application:</b>	ELISA, WB, Flow Cytometry
<b>Reactivity:</b>	Myc tag, All Species Expected
<b>Format:</b>	Purified
<b>Isotype:</b>	Mouse IgG1
<b>Antibody Type:</b>	Monoclonal
<b>Formulation:</b>	Phosphate-buffered solution, pH 7.2, containing 0.09% sodium azide
<b>Protein Concentration:</b>	0.5 mg/mL
<b>Storage and Handling:</b>	Quick spin the vial after receiving. The antibody solution should be stored between 2°C and 8°C without dilution.
<b>Recommended Usage:</b>	For ELISA application, this antibody can be used at 0.05 µg/mL or lower as the detection antibody. For flow cytometric staining, it is recommended to use less than 0.25 µg of this reagent per 0.5-1.0 million cells in a 100 µL volume. Optimal reagent performance should be determined by titration for each specific application.

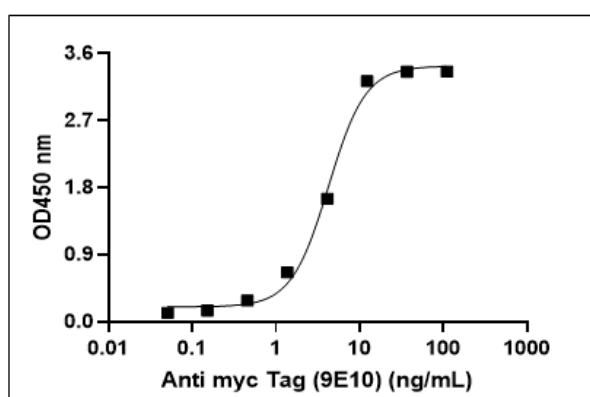
### BACKGROUND INFORMATION

---

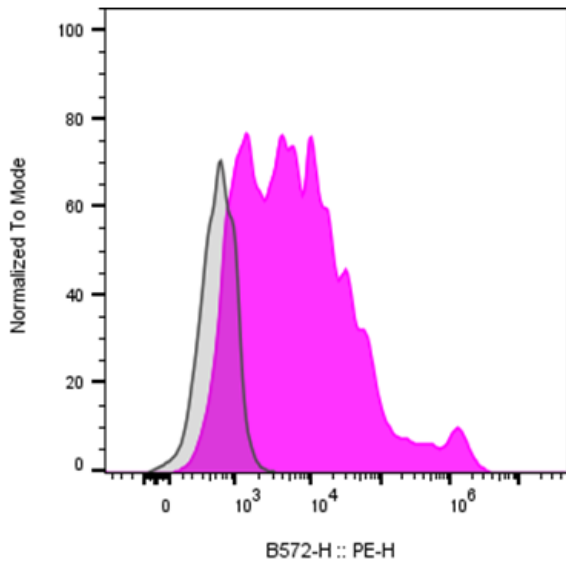
The 9E10 monoclonal antibody was generated by immunizing mice with a synthetic peptide corresponding to amino acids 408-438 (E E Q K L I S E E D L L R K R R E Q L K H K L E Q L R N S C A) of the human c-Myc protein. It specifically recognizes the epitope EQKLISEEDL, a defined sequence within the human c-Myc protein

### PRODUCT DATA

---



Multi-tag protein (catalog 603901) is coated at 100ng<sub>mL</sub> (10ng<sub>well</sub>). Anti-c-Myc antibody (clone 9E10) can detect the Multi-tag protein in the dose dependent manner. For ELISA application, this antibody can be used at 0.05 ug<sub>mL</sub> or lower as the detection antibody.



Multi-tag (including Myc tag) transmembrane protein transfected CHO cells were stained either purified Anti-Myc antibody clone 9E10 (color-filled histogram) or an isotype control (gray histogram), followed by PE anti-mouse IgG secondary antibody.