

Anti-c-Myc Antibody

Catalog Number:	300901, 300902
Size:	50 ug, 200 ug
Target Name:	Myc tag, Myc epitope
Regulatory Status:	RUO

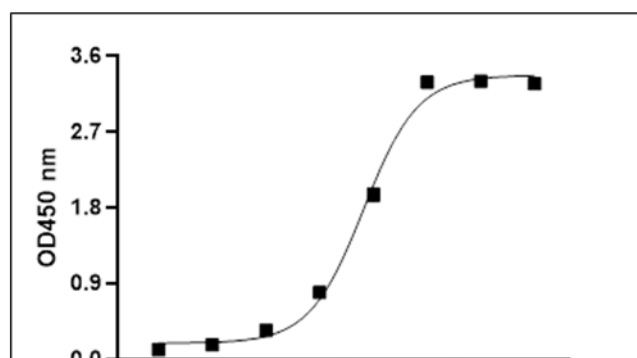
PRODUCT DETAILS

Clone:	1004AM2b
Application:	ELISA, WB, Flow Cytometry
Reactivity:	Myc tag, All Species Expected
Format:	Purified
Isotype:	Mouse IgG2b
Antibody Type:	Monoclonal
Formulation:	Phosphate-buffered solution, pH 7.2, containing 0.09% sodium azide
Protein Concentration:	0.5 mg/mL
Storage and Handling:	Quick spin the vial after receiving. The antibody solution should be stored between 2°C and 8°C without dilution.
Recommended Usage:	For ELISA application, this antibody can be used at 0.01 µg/mL or lower as the detection antibody. For flow cytometric staining, it is recommended to use less than 0.25 µg of this reagent per 0.5-1.0 million cells in a 100 µL volume. Optimal reagent performance should be determined by titration for each specific application.
Isotype Control:	301601

BACKGROUND INFORMATION

This monoclonal antibody was generated by immunizing mice with a synthetic peptide corresponding to amino acids 408-438 (EEQKLISEEDLLRKRREQLKHKLEQLRNCA) of the human c-Myc protein. It specifically recognizes the epitope EQKLISEEDL, a defined sequence within the human c-Myc protein

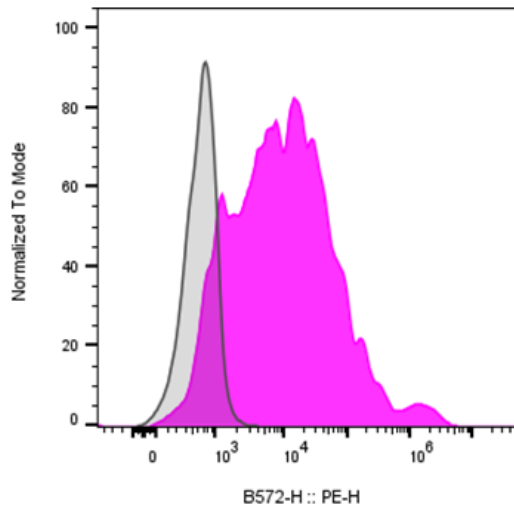
PRODUCT DATA



Multi-tag protein (catalog 603901) is coated at 100ng/mL (10ng_well). Anti-c-Myc antibody (clone 1004AM2b) can detect the Multi-tag protein in the dose dependent manner. For ELISA

application, this antibody can be used at 0.01 ug_mL or lower as the detection antibody.

This product is supplied subject to the terms and conditions at www.innocyto.com/web/terms.php and may only be used as provided in the stated terms. Products are for Research Use Only.



Multi-tag (including Myc tag) transmembrane protein transfected CHO cells were stained either purified Anti-Myc antibody clone 1004AM2b (color-filled histogram) or an isotype control (gray histogram), followed by PE anti-mouse IgG secondary antibody.