

Anti-DYKDDDDK Antibody

Catalog Number:	301101, 301102
Size:	50 ug, 200 ug
Target Name:	DYKDDDDK Tag
Regulatory Status:	RUO

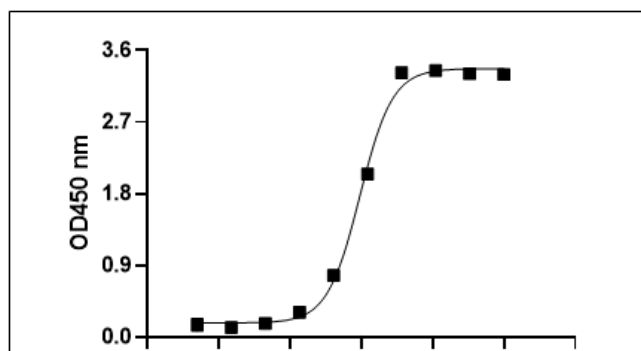
PRODUCT DETAILS

Clone:	1002AH1
Application:	ELISA, WB, Flow Cytometry
Reactivity:	DYKDDDDK tag, All Species Expected
Format:	Purified
Isotype:	Human IgG1
Antibody Type:	Monoclonal
Formulation:	Phosphate-buffered solution, pH 7.2, containing 0.09% sodium azide
Protein Concentration:	0.5 mg/mL
Storage and Handling:	Quick spin the vial after receiving. The antibody solution should be stored between 2°C and 8°C without dilution.
Recommended Usage:	For ELISA application, this antibody can be used at 0.01 µg/mL or lower as the detection antibody. For flow cytometric staining, it is recommended to use less than 0.25 µg of this reagent per 0.5-1.0 million cells in a 100 µL volume. Optimal reagent performance should be determined by titration for each specific application.
Isotype Control:	301201

BACKGROUND INFORMATION

The DYKDDDDK Tag antibody specifically detects proteins containing the DYKDDDDK epitope, commonly known as the FLAG® tag (originally from Sigma®). It recognizes the DYKDDDDK sequence when fused to either the N-terminus or C-terminus of the target protein.

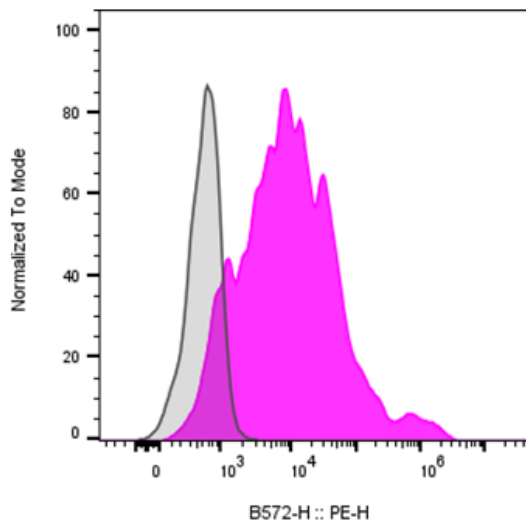
PRODUCT DATA



Multi-tag protein (catalog 603901) is coated at 100ng/mL (10ng/well). Anti-DYKDDDDK Antibody(clone 1002AH1) can detect the Multi-tag protein in the dose dependent manner. For

ELISA application, this antibody can be used at 0.01 ug/mL or lower as the detection antibody.

This product is supplied subject to the terms and conditions at www.innocyto.com/web/terms.php and may only be used as provided in the stated terms. Products are for Research Use Only.



Multi-tag (including DYKDDDDK tag) transmembrane protein transfected CHO cells were stained either purified Anti-DYKDDDDK antibody clone 1002AH1 (color-filled histogram) or an isotype control (gray histogram), followed by PE anti-human IgG secondary antibody.