

## Anti-DYKDDDDK Antibody

<b>Catalog Number:</b>	301101, 301102
<b>Size:</b>	50 ug, 200 ug
<b>Target Name:</b>	DYKDDDDK Tag
<b>Regulatory Status:</b>	RUO

### PRODUCT DETAILS

---

<b>Clone:</b>	1002AH1
<b>Application:</b>	ELISA, WB, Flow Cytometry
<b>Reactivity:</b>	DYKDDDDK tag, All Species Expected
<b>Format:</b>	Purified
<b>Isotype:</b>	Human IgG1
<b>Antibody Type:</b>	Monoclonal
<b>Formulation:</b>	Phosphate-buffered solution, pH 7.2, containing 0.09% sodium azide
<b>Protein Concentration:</b>	0.5 mg/mL
<b>Storage and Handling:</b>	Quick spin the vial after receiving. The antibody solution should be stored between 2°C and 8°C without dilution.
<b>Recommended Usage:</b>	For ELISA application, this antibody can be used at 0.01 µg/mL or lower as the detection antibody. For flow cytometric staining, it is recommended to use less than 0.25 µg of this reagent per 0.5-1.0 million cells in a 100 µL volume. Optimal reagent performance should be determined by titration for each specific application.
<b>Isotype Control:</b>	301201

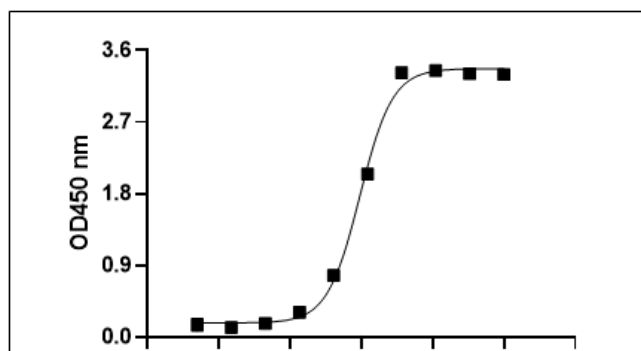
### BACKGROUND INFORMATION

---

The DYKDDDDK Tag antibody specifically detects proteins containing the DYKDDDDK epitope, commonly known as the FLAG® tag (originally from Sigma®). It recognizes the DYKDDDDK sequence when fused to either the N-terminus or C-terminus of the target protein.

### PRODUCT DATA

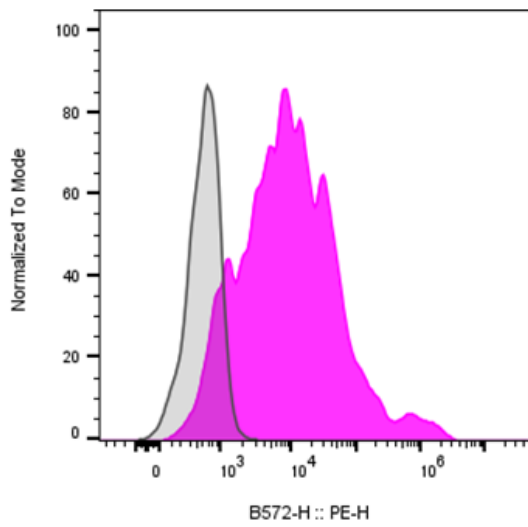
---



Multi-tag protein (catalog 603901) is coated at 100ng/mL (10ng/well). Anti-DYKDDDDK Antibody(clone 1002AH1) can detect the Multi-tag protein in the dose dependent manner. For

ELISA application, this antibody can be used at 0.01 ug/mL or lower as the detection antibody.

This product is supplied subject to the terms and conditions at [www.innocyto.com/web/terms.php](http://www.innocyto.com/web/terms.php) and may only be used as provided in the stated terms. Products are for Research Use Only.



Multi-tag (including DYKDDDDK tag) transmembrane protein transfected CHO cells were stained either purified Anti-DYKDDDDK antibody clone 1002AH1 (color-filled histogram) or an isotype control (gray histogram), followed by PE anti-human IgG secondary antibody.

This product is supplied subject to the terms and conditions at [www.innocyto.com/web/terms.php](http://www.innocyto.com/web/terms.php) and may only be used as provided in the stated terms. Products are for Research Use Only.