

## FITC Rat IgG1 Isotype Control Antibody

|                           |                          |
|---------------------------|--------------------------|
| <b>Catalog Number:</b>    | 300104                   |
| <b>Size:</b>              | 50 ug                    |
| <b>Target Name:</b>       | Rat IgG1 Isotype Control |
| <b>Regulatory Status:</b> | RUO                      |

### PRODUCT DETAILS

---

|                               |  |
|-------------------------------|--|
| <b>Clone:</b>                 | RTK2071  |
| <b>Application:</b>           | Flow Cytometry   |
| <b>Reactivity:</b>            | N/A  |
| <b>Format:</b>                | FITC   |
| <b>Isotype:</b>               | Rat IgG1   |
| <b>Antibody Type:</b>         | Monoclonal   |
| <b>Formulation:</b>           | Phosphate-buffered solution, pH 7.2, containing 0.09% sodium azide and 0.2% (w/v) BSA  |
| <b>Protein Concentration:</b> | 0.2mg/mL   |
| <b>Storage and Handling:</b>  | Store the antibody undiluted at 2°C to 8°C.  |
| <b>Recommended Usage:</b>     | Use at concentrations comparable to those used for the target-specific antibody. FITC has an excitation max at 493 nm and an emission max at 525 nm. |
| <b>Excitation Laser:</b>      | Blue Laser (488 nm)  |

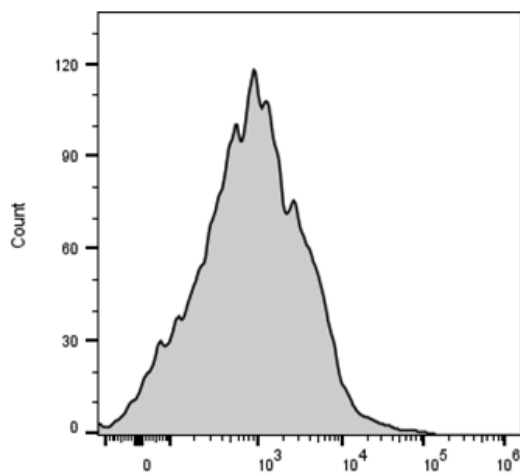
### BACKGROUND INFORMATION

---

The isotype of RTK2071 immunoglobulin is rat IgG1,  $\kappa$ . This antibody was chosen as an isotype control after screening on a variety of resting, activated, live, and fixed mouse, rat and human tissues.

### PRODUCT DATA

---



Mouse splenocytes stained with FITC Rat IgG1 Isotype Control clone RTK2071 (gray histogram)