

## iF647 Rat IgG2a Isotype Control Antibody

<b>Catalog Number:</b>	300203
<b>Size:</b>	50 ug
<b>Target Name:</b>	Rat IgG2a Isotype control
<b>Regulatory Status:</b>	RUO

### PRODUCT DETAILS

---

<b>Clone:</b>	RTK2758
<b>Application:</b>	Flow Cytometry
<b>Reactivity:</b>	N/A
<b>Format:</b>	iF647
<b>Isotype:</b>	Rat IgG2a
<b>Antibody Type:</b>	Monoclonal
<b>Formulation:</b>	Phosphate-buffered solution, pH 7.2, containing 0.09% sodium azide and 0.2% (w/v) BSA
<b>Protein Concentration:</b>	0.2mg/mL
<b>Storage and Handling:</b>	Store the antibody undiluted at 2°C to 8°C.
<b>Recommended Usage:</b>	Use at concentrations comparable to those used for the target-specific antibody. iF647 has an excitation max at 656 nm and an emission max at 670 nm.
<b>Excitation Laser:</b>	Red Laser (633 nm)

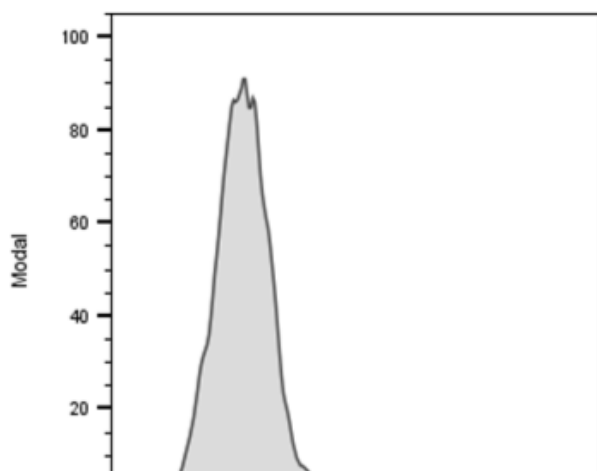
### BACKGROUND INFORMATION

---

The RTK2758 immunoglobulin reacts with KLH. The isotype of this antibody is rat IgG2a,  $\kappa$ . This antibody was chosen as an isotype control after screening on a variety of resting, activated, live, and fixed mouse, rat and human tissues.

### PRODUCT DATA

---



Mouse splenocytes stained with iF647 Rat IgG2a Isotype Control clone RTK2758 (gray histogram)