

PE Rat IgG2b Isotype Control Antibody

Catalog Number:	300305
Size:	50 ug
Target Name:	Rat IgG2b Isotype control
Regulatory Status:	RUO

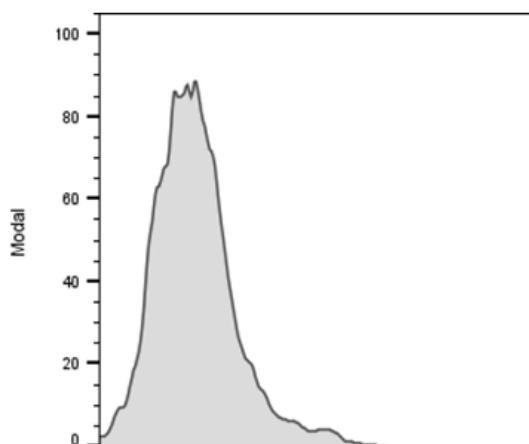
PRODUCT DETAILS

Clone:	RTK4530
Application:	Flow Cytometry
Reactivity:	N/A
Format:	PE
Isotype:	Rat IgG2b
Antibody Type:	Monoclonal
Formulation:	Phosphate-buffered solution, pH 7.2, containing 0.09% sodium azide and 0.2% (w/v) BSA
Protein Concentration:	Supplied at a lot-specific concentration.
Storage and Handling:	The antibody solution should be stored undiluted between 2°C and 8°C, and protected from prolonged exposure to light. Do not freeze.
Recommended Usage:	Use at concentrations comparable to those used for the target-specific antibody. PE has an excitation max at 565 nm and an emission max at 575 nm.
Excitation Laser:	Blue Laser (488 nm) Green/Yellow laser (532/561nm)

BACKGROUND INFORMATION

The RTK4530 immunoglobulin reacts with KLH. The isotype of this antibody is rat IgG2b, κ . This antibody was chosen as an isotype control after screening on a variety of resting, activated, live, and fixed mouse, rat and human tissues.

PRODUCT DATA



Mouse splenocytes stained with PE Rat IgG2b Isotype Control clone RTK4530 (gray histogram)