

Technical Data Sheet

iF647 Human IgG1 isotype control

Catalog Number: 301207, 301208

Size: 25 ug, 100 ug

Target Name: Human IgG1 isotype control

Regulatory Status: RUO

Product Details

Clone: 1016AH1

Application: FC

Reactivity: N/A

Format: iF647

Isotype: Human IgG1

Antibody Type: Monoclonal

Formulation: Phosphate-buffered solution, pH 7.2, containing 0.09% sodium azide and 0.2% (w/v) BSA

Protein Concentration: 0.2mg/mL

Storage&Handling: The antibody solution should be stored undiluted between 2°C and 8°C, and protected from prolonged exposure to light. Do not freeze.

Recommended Usage: Use at concentrations comparable to those used for the target-specific antibody

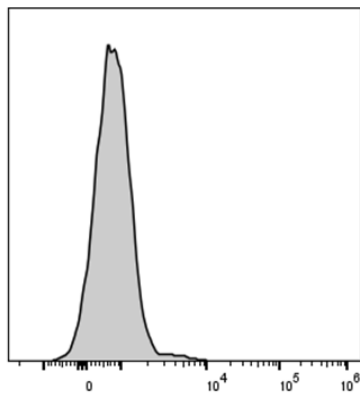
Excitation Laser: Red Laser (633 nm)

Release Date: Aug-25

Background Information

There are four IgG subclasses (IgG1, 2, 3, and 4) in humans, named in order of their abundance in serum (IgG1 being the most abundant). The measurement of immunoglobulin G can be a diagnostic tool for certain conditions.

Product Data



Human IgG1_1016AH1 iF647

Human peripheral blood lymphocytes was stained with iF647 Human IgG1 isotype control clone 1016AH1 (gray histogram).