

Technical Data Sheet

PE Human IgG4 isotype control

Catalog Number: 301309, 301310
Size: 25 ug, 100 ug
Target Name: Human IgG4 isotype control
Regulatory Status: RUO

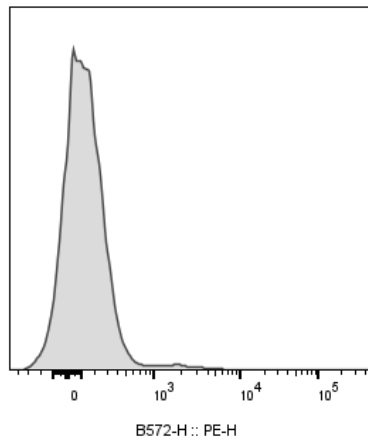
Product Details

Clone: 1016AH4
Application: FC
Reactivity: N/A
Format: PE
Isotype: Human IgG4
Antibody Type: Monoclonal
Formulation: Phosphate-buffered solution, pH 7.2, containing 0.09% sodium azide and 0.2% (w/v) BSA
Protein Concentration: 0.2 mg/mL
Storage and Handling: The antibody solution should be stored undiluted between 2°C and 8°C, and protected from prolonged exposure to light. Do not freeze.
Recommended Usage: Use at concentrations comparable to those used for the target-specific antibody
Excitation Laser: Blue Laser (488 nm) Green/Yellow laser (532/561nm)

Background Information

There are four IgG subclasses (IgG1, 2, 3, and 4) in humans, named in order of their abundance in serum (IgG1 being the most abundant). The measurement of immunoglobulin G can be a diagnostic tool for certain conditions.

Product Data



Human peripheral blood lymphocytes stained with PE Human IgG4 isotype control clone 1016AH4.