

APC/Cyanine7 Mouse IgG1 Isotype Control Antibody

Catalog Number:	301405, 301406, 301435
Size:	25 ug, 100 ug, 25 ug
Target Name:	Mouse IgG1 Isotype Control
Regulatory Status:	RUO

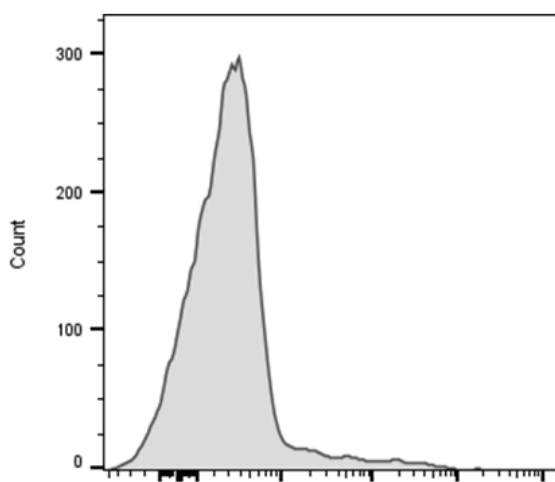
PRODUCT DETAILS

Clone:	MOPC-21
Application:	Flow Cytometry
Reactivity:	N/A
Format:	APC/Cyanine7
Isotype:	Mouse IgG1
Antibody Type:	Monoclonal
Formulation:	Phosphate-buffered solution, pH 7.2, containing 0.09% sodium azide and 0.2% (w/v) BSA
Protein Concentration:	0.2mg/mL
Storage&Handling:	Store the antibody undiluted at 2°C to 8°C.
Recommended Usage:	Use at concentrations comparable to those used for the target-specific antibody APC/Cyanine7 has an excitation max at 650 nm and an emission max at 774 nm.
Excitation Laser:	Red Laser (633 nm)

BACKGROUND INFORMATION

The clone of MOPC-21 antibody is mouse isotype IgG1, k. The MOPC-21 immunoglobulin has unknown specificity. It is chosen as an isotype control after screening on a variety of resting, activated, live, and fixed mouse, rat and human tissues.

PRODUCT DATA



Human peripheral blood lymphocytes was stained with APC-Cy7 Mouse IgG1 isotype control clone MOPC-21 (gray histogram).