

## Technical Data Sheet

### APC/Cyanine7 Mouse IgG1 Isotype Control

**Catalog Number:** 301405, 301406

**Size:** 25 ug, 100 ug

**Target Name:** Mouse IgG1 Isotype Control

**Regulatory Status:** RUO

#### Product Details

---

**Clone:** MOPC-21

**Application:** FC

**Reactivity:** N/A

**Format:** APC/Cy7

**Isotype:** Mouse IgG1

**Antibody Type:** Monoclonal

**Formulation:** Phosphate-buffered solution, pH 7.2, containing 0.09% sodium azide and 0.2% (w/v) BSA

**Protein Concentration:** 0.2mg/mL

**Storage&Handling:** Store the antibody undiluted at 2°C to 8°C.

**Recommended Usage:** Use at concentrations comparable to those used for the target-specific antibody

**Excitation Laser:** Red Laser (633 nm)

**Release Date:** Aug-25

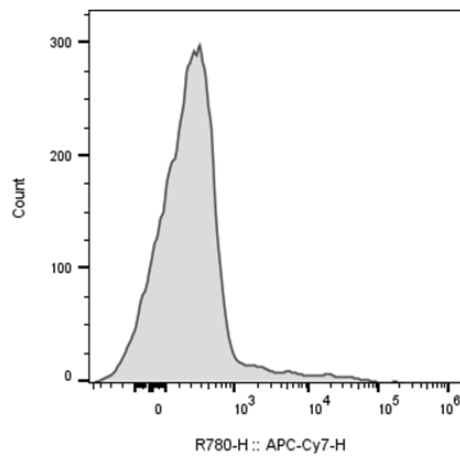
#### Background Information

---

The clone of MOPC-21 antibody is mouse isotype IgG1, k. The MOPC-21 immunoglobulin has unknown specificity. It is chosen as an isotype control after screening on a variety of resting, activated, live, and fixed mouse, rat and human tissues.

#### Product Data

---



Human peripheral blood lymphocytes was stained with APC-Cy7 Mouse IgG1 isotype control clone MOPC-21 (gray histogram).