

## FITC Mouse IgG1 Isotype Control Antibody

<b>Catalog Number:</b>	301415, 301416
<b>Size:</b>	25 ug, 100 ug
<b>Target Name:</b>	Mouse IgG1 Isotype Control
<b>Regulatory Status:</b>	RUO

### PRODUCT DETAILS

---

<b>Clone:</b>	MOPC-21
<b>Application:</b>	Flow Cytometry
<b>Reactivity:</b>	N/A
<b>Format:</b>	FITC
<b>Isotype:</b>	Mouse IgG1
<b>Antibody Type:</b>	Monoclonal
<b>Formulation:</b>	Phosphate-buffered solution, pH 7.2, containing 0.09% sodium azide and 0.2% (w/v) BSA
<b>Protein Concentration:</b>	0.2mg/mL
<b>Storage and Handling:</b>	The antibody solution should be stored undiluted between 2°C and 8°C, and protected from prolonged exposure to light. Do not freeze.
<b>Recommended Usage:</b>	Use at concentrations comparable to those used for the target-specific antibody. FITC has an excitation max at 493 nm and an emission max at 525 nm.
<b>Excitation Laser:</b>	Blue Laser (488 nm)

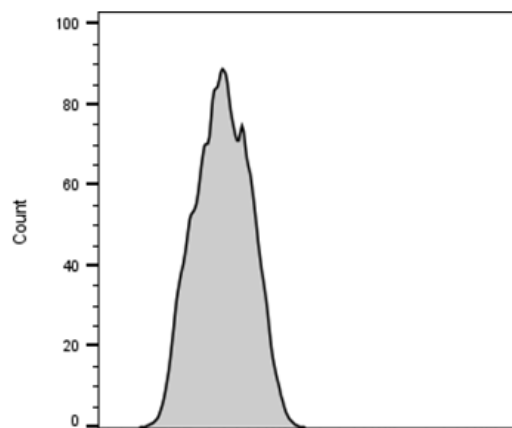
### BACKGROUND INFORMATION

---

The clone of MOPC-21 antibody is mouse isotype IgG1, k. The MOPC-21 immunoglobulin has unknown specificity. It is chosen as an isotype control after screening on a variety of resting, activated, live, and fixed mouse, rat and human tissues.

### PRODUCT DATA

---



Mouse splenocytes stained with FITC Mouse IgG1 Isotype Control clone MOPC-21 (gray histogram).