

## Biotin Mouse IgG2a Isotype Control Antibody

<b>Catalog Number:</b>	301507, 301508
<b>Size:</b>	25 ug, 100 ug
<b>Target Name:</b>	Mouse IgG2a Isotype Control
<b>Regulatory Status:</b>	RUO

### PRODUCT DETAILS

---

<b>Clone:</b>	MOPC-173
<b>Application:</b>	Flow Cytometry
<b>Reactivity:</b>	N/A
<b>Format:</b>	Biotin
<b>Isotype:</b>	Mouse IgG2a
<b>Antibody Type:</b>	Monoclonal
<b>Formulation:</b>	Phosphate-buffered solution, pH 7.2, containing 0.09% sodium azide and 0.2% (w/v) BSA
<b>Protein Concentration:</b>	0.2 mg/mL
<b>Storage and Handling:</b>	Store the antibody undiluted at 2°C to 8°C.
<b>Recommended Usage:</b>	Use at concentrations comparable to those used for the target-specific antibody.

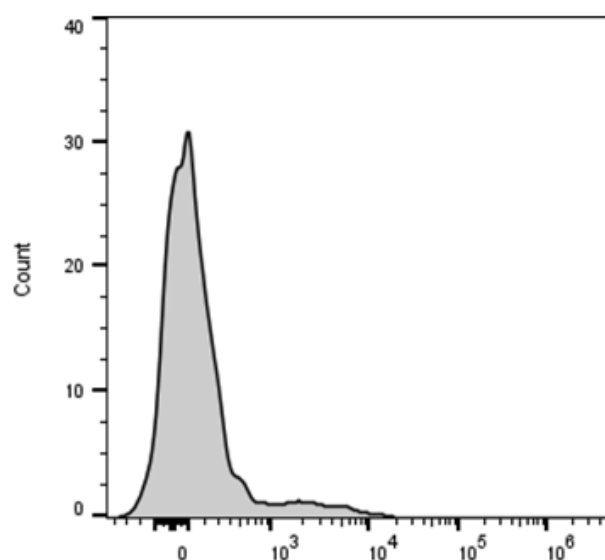
### BACKGROUND INFORMATION

---

The clone of MOPC-173 antibody is mouse isotype IgG2a, k. The MOPC-21 immunoglobulin has unknown specificity. It is chosen as an isotype control after screening on a variety of resting, activated, live, and fixed mouse, rat and human tissues.

### PRODUCT DATA

---



Mouse splenocytes stained with Biotin Mouse IgG2a Isotype Control clone MOPC-173 (gray histogram) followed by SA-PE.