

## Mouse IgG2b Isotype Control Antibody

<b>Catalog Number:</b>	301601, 301602
<b>Size:</b>	100 ug, 500 ug
<b>Target Name:</b>	Mouse IgG2b Isotype Control
<b>Regulatory Status:</b>	RUO

### PRODUCT DETAILS

---

<b>Clone:</b>	MOPC-21-2b
<b>Application:</b>	Flow Cytometry
<b>Reactivity:</b>	N/A
<b>Format:</b>	Purified
<b>Isotype:</b>	Mouse IgG2b
<b>Antibody Type:</b>	Monoclonal
<b>Formulation:</b>	Phosphate-buffered solution, pH 7.2, containing 0.09% sodium azide
<b>Protein Concentration:</b>	0.5 mg/mL
<b>Storage and Handling:</b>	Store the antibody undiluted at 2°C to 8°C.
<b>Recommended Usage:</b>	Use at concentrations comparable to those used for the target-specific antibody.

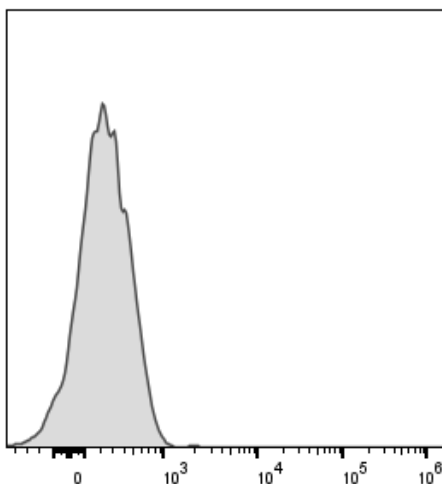
### BACKGROUND INFORMATION

---

This antibody is a clone of the MOPC-21 variable region with a Mouse IgG2b, kappa isotype. MOPC-21 immunoglobulin has an unknown antigen specificity and is commonly used as an isotype control. It was selected based on screening across a variety of resting and activated cells, as well as live and fixed tissues from mouse, rat, and human sources.

### PRODUCT DATA

---



Human peripheral blood lymphocytes stained either with purified mouse IgG2b isotype control clone MOPC-21-2b, followed by PE anti-mouse IgG.