

Technical Data Sheet

iF560 Anti-Human CD45

Catalog Number: 101805, 101806

Size: 25 tests, 100 tests

Target Name: CD45, Leukocyte Common Antigen (LCA), T200

Regulatory Status: RUO

Product Details

Clone: 045AB

Application: FC

Reactivity: Human

Format: iF560

Isotype: Rabbit IgG

Antibody Type: Monoclonal

Formulation: Phosphate-buffered solution, pH 7.2, containing 0.09% sodium azide and 0.2% (w/v) BSA

Protein Concentration: Supplied at a lot-specific concentration.

Storage&Handling: The antibody solution should be stored undiluted between 2°C and 8°C, and protected from prolonged exposure to light. Do not freeze.

Recommended Usage: For flow cytometric staining, it is recommended to use 5 µL of this reagent per 0.5-1.0 million cells in a 100 µL volume. Optimal reagent performance should be determined by titration for each specific application.

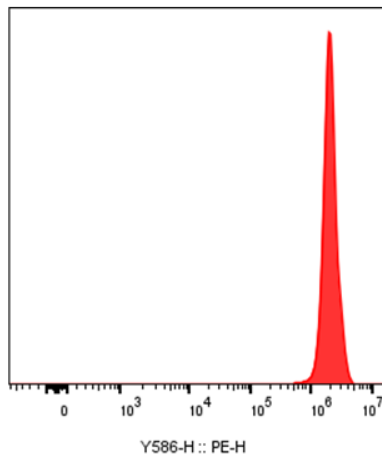
Excitation Laser: Green/Yellow laser (532/561nm)

Release Date: Aug-25

Background Information

Protein tyrosine phosphatase, receptor type, C also known as PTPRC is an enzyme that, in humans, is encoded by the PTPRC gene.[5] PTPRC is also known as CD45 antigen (CD stands for cluster of differentiation), which was originally called leukocyte common antigen (LCA). leucocyte common antigen, a type I transmembrane protein present on all hemopoietic cells except erythrocytes that assists in cell activation; expressed in lymphomas, B-cell chronic lymphocytic leukemia, hairy cell leukemia, and acute nonlymphocytic leukemia. CD45 is a signaling molecule that regulates a variety of cellular processes including cell growth, differentiation, cell cycle, and oncogenic transformation. CD45 plays a critical role in T and B cell antigen receptor-mediated activation by dephosphorylating substrates including p56Lck, p59Fyn, and other Src family kinases.

Product Data



Human peripheral blood lymphocytes was stained with iF560 Anti-Human CD45 clone 045AB (color-filled histogram).