

FITC Rabbit IgG, κ 2 Isotype Control Antibody

| | |
|---------------------------|--|
| Catalog Number: | 301807, 301808 |
| Size: | 25 ug, 100 ug |
| Target Name: | Rabbit IgG, κ 2 Isotype Control |
| Regulatory Status: | RUO |

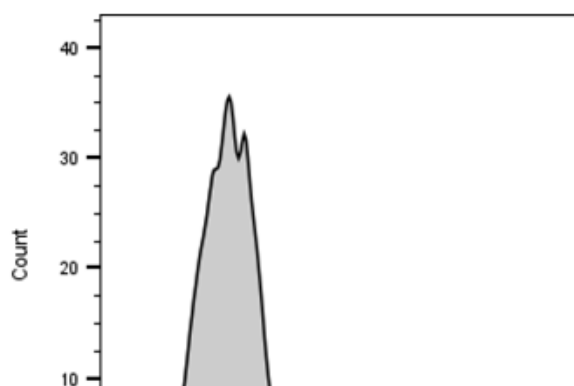
PRODUCT DETAILS

| | |
|-------------------------------|--|
| Clone: | MOPC-21-B2 |
| Application: | Flow Cytometry |
| Reactivity: | N/A |
| Format: | FITC |
| Isotype: | Rabbit IgG, κ 2 |
| Antibody Type: | Monoclonal |
| Formulation: | Phosphate-buffered solution, pH 7.2, containing 0.09% sodium azide and 0.2% (w/v) BSA |
| Protein Concentration: | 0.2mg/mL |
| Storage and Handling: | The antibody solution should be stored undiluted between 2°C and 8°C, and protected from prolonged exposure to light. Do not freeze. |
| Recommended Usage: | Use at concentrations comparable to those used for the target-specific antibody. FITC has an excitation max at 493 nm and an emission max at 525 nm. |
| Excitation Laser: | Blue Laser (488 nm) |

BACKGROUND INFORMATION

This antibody is a clone of the MOPC-21 variable region with a rabbit IgG, κ 2 isotype. MOPC-21 immunoglobulin has an unknown antigen specificity and is commonly used as an isotype control. It was selected based on screening across a variety of resting and activated cells, as well as live and fixed tissues from mouse, rat, and human sources.

PRODUCT DATA



Mouse splenocytes stained with FITC Rabbit IgG, κ 2 Isotype Control clone MOPC-21-B2 (gray histogram).