

## Technical Data Sheet

### PB Anti-Human HLA-DR

**Catalog Number:** 102707, 102708

**Size:** 25 tests, 100 tests

**Target Name:** HLA-DR, Major Histocompatibility Class II, MHC class II

**Regulatory Status:** RUO

#### Product Details

---

**Clone:** L243

**Application:** FC

**Reactivity:** Human

**Format:** PB

**Isotype:** Mouse IgG2a

**Antibody Type:** Monoclonal

**Formulation:** Phosphate-buffered solution, pH 7.2, containing 0.09% sodium azide and 0.2% (w/v) BSA

**Protein Concentration:** Supplied at a lot-specific concentration.

**Storage and Handling:** The antibody solution should be stored undiluted between 2°C and 8°C, and protected from prolonged exposure to light. Do not freeze.

**Recommended Usage:** For flow cytometric staining, it is recommended to use 5 µL of this reagent per 0.5-1.0 million cells in a 100 µL volume. Optimal reagent performance should be determined by titration for each specific application.

**Excitation Laser:** Violet laser (405nm)

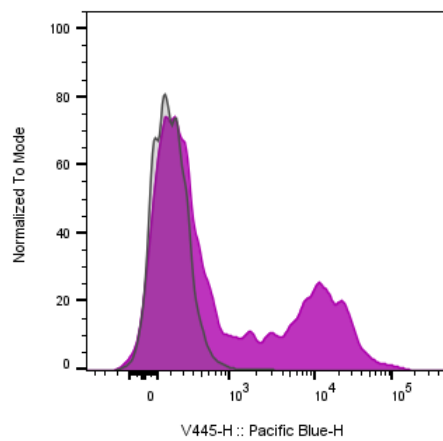
#### Background Information

---

HLA-DR is a heterodimeric cell surface glycoprotein comprised of a 36 kD  $\alpha$  (heavy) chain and a 27 kD  $\beta$  (light) chain. It is expressed on B cells, activated T cells, monocytes/macrophages, dendritic cells, and other non-professional APCs. In conjunction with the CD3/TCR complex and CD4 molecules, HLA-DR is critical for efficient peptide presentation to CD4<sup>+</sup> T cells.

#### Product Data

---



Human peripheral blood lymphocytes stained either PB Anti-Human HLA-DR clone L243 (color-filled histogram) or an isotype control (gray histogram).