

Human PD-L1 (CD274) Protein (C-Fc)

Catalog Number:	800901, 800902
Size:	25 ug, 100 ug
Target Name:	PD-L1, CD274, B7-H1, PDCD1L1, PDCD1LG1,
Regulatory Status:	RUO

PRODUCT DETAILS

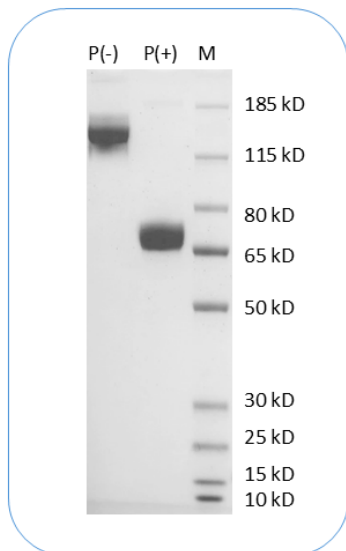
Application:	ELISA, BLI
Format:	Liquid, Purified
Expression Host:	HEK293
Species:	Human
Sources:	Recombinant Human PD-L1 (Phe19-Thr239) with C-terminus Fc tag is expressed in HEK293 cells.
Accession Number:	Q9NZQ7
Molecular Weight:	The protein has a predicted molecular weight of 54 kDa and migrates at approximately 70 kDa on SDS-PAGE under DTT-reducing conditions.
Affinity Tag:	C-Fc
Purity:	>95% based on SDS-PAGE under reducing condition
Formulation:	1xPBS buffer, pH7.4, 0.22 µm filtered
Endotoxin level:	Not tested
Protein Concentration:	25µg size is bottled at 0.2mg/mL concentration. 100 µg size is supplied at a lot-specific concentration.
Storage and Handling:	Briefly centrifuge the vial upon receipt. An unopened vial can be stored at 4°C for up to 2 weeks, or at -20°C or below for up to six months. The protein may be further diluted to 0.1 mg/mL using 0.22 µm-filtered PBS buffer (pH 7.4). For long-term storage, the diluted stock solution should be aliquoted and stored at ≤ -70°C to minimize freeze-thaw cycles. If additional dilution is required, carrier proteins such as FBS or BSA should be added to maintain protein stability.

BACKGROUND INFORMATION

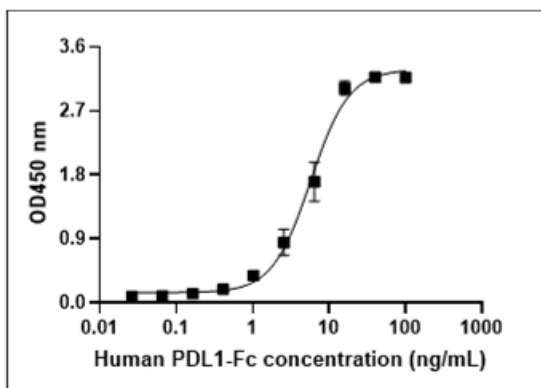
Programmed death-ligand 1 (PD-L1, also known as CD274 or B7-H1) is a type I transmembrane glycoprotein and a key immune checkpoint molecule in the B7 family. It is broadly expressed on immune cells (such as T cells, B cells, macrophages, and dendritic cells) and in various tissues, as well as on many tumor types. PD-L1 interacts with its receptor PD-1, expressed on activated T and B cells, to deliver inhibitory signals that suppress T cell proliferation, cytokine production, and cytolytic function. This interaction plays a critical role in maintaining immune homeostasis, preventing autoimmunity, and enabling immune evasion by tumors. Therapeutic antibodies targeting PD-L1 or PD-1 have shown significant clinical benefit in cancer immunotherapy by restoring T cell activity. PD-L1 is also implicated in tolerance during pregnancy, chronic infections, and transplantation. It contains two extracellular Ig-like

domains, and its expression can be induced by inflammatory cytokines such as IFN- γ .

PRODUCT DATA



Human PD-L1 Protein (C-Fc) on SDS-PAGE under reducing condition. The gel was stained for 1 hour with BlinkBlue (catalog 700102). The purity of this protein appears to be greater than 95%.



Streptavidin is immobilized at 2 μg_mL (100 μL_well), followed by incubation with biotinylated human PD-1 (C-His-Avi, Catalog #802803) at 0.5 μg_mL . A serial dilution of recombinant human PD-L1 (C-Fc) is then applied. Human PD-L1 (C-Fc) binds to the biotinylated human PD-1 protein in a dose-dependent manner.

This product is supplied subject to the terms and conditions at www.innocyto.com/web/terms.php and may only be used as provided in the stated terms. Products are for Research Use Only.