

## Human Mesothelin (R35-E298) Protein (C-His)

<b>Catalog Number:</b>	801401, 801402
<b>Size:</b>	25 ug, 100 ug
<b>Target Name:</b>	Mesothelin, MPF, MSLN
<b>Regulatory Status:</b>	RUO

### PRODUCT DETAILS

---

<b>Application:</b>	ELISA, BLI
<b>Format:</b>	Liquid, Purified
<b>Expression Host:</b>	HEK293
<b>Species:</b>	Human
<b>Sources:</b>	Human Mesothelin protein (Accession # AAH09272.1) (R35-E298) with C-terminus His tag is expressed in HEK293 cells.
<b>Accession Number:</b>	Q13421
<b>Molecular Weight:</b>	The protein has a predicted molecular weight of 28kDa. Under DTT-reducing conditions, it migrates at approximately 30 kDa.
<b>Affinity Tag:</b>	C-His
<b>Purity:</b>	>95% based on SDS-PAGE under reducing condition
<b>Formulation:</b>	1xPBS buffer, pH7.4, 0.22 µm filtered
<b>Endotoxin level:</b>	Not tested
<b>Protein Concentration:</b>	25µg size is bottled at 0.2mg/mL concentration. 100 µg size is supplied at a lot-specific concentration.
<b>Storage and Handling:</b>	Briefly centrifuge the vial upon receipt. An unopened vial can be stored at 4°C for up to 2 weeks, or at -20°C or below for up to six months. The protein may be further diluted to 0.1 mg/mL using 0.22 µm-filtered PBS buffer (pH 7.4). For long-term storage, the diluted stock solution should be aliquoted and stored at ≤ -70°C to minimize freeze-thaw cycles. If additional dilution is required, carrier proteins such as FBS or BSA should be added to maintain protein stability.

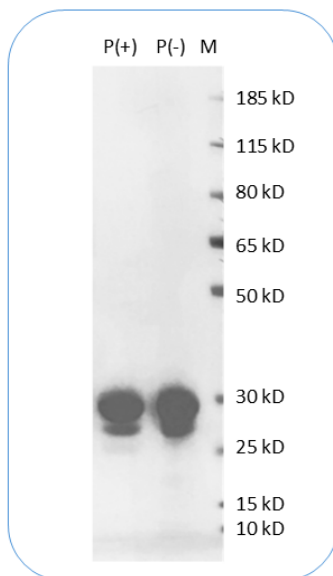
### BACKGROUND INFORMATION

---

Mesothelin (MSLN), also known as CAK1, is a 70 kDa cell-surface protein cleaved into MPF (30 kDa) and mesothelin (40 kDa). MPF acts as a cytokine, while mesothelin is membrane-bound via glycosylphosphatidylinositol. It is overexpressed in various cancers, including mesotheliomas and ovarian cancer, and interacts with MUC16/CA-125, a cancer biomarker. Elevated mesothelin levels in serum make it a target for diagnostics and therapies, such as the recombinant immunotoxin SS1P, which has shown promise in clinical trials.

## PRODUCT DATA

---



Human Mesothelin (R35-E298) Protein (C-His) on SDS-PAGE under reducing condition. The gel was stained for 1 hour with BlinkBlue (catalog 700102). The purity of this protein appears to be greater than 95%.

This product is supplied subject to the terms and conditions at [www.innocyto.com/web/terms.php](http://www.innocyto.com/web/terms.php) and may only be used as provided in the stated terms. Products are for Research Use Only.