

APC Human Mesothelin (E296-G580) Protein (C-His)

Catalog Number:	801505, 801506
Size:	25 ug, 100 ug
Target Name:	Mesothelin, MPF, MSLN
Regulatory Status:	RUO

PRODUCT DETAILS

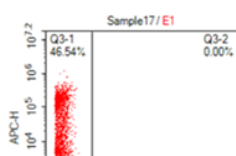
Application:	Flow Cytometry
Format:	Liquid, APC
Expression Host:	HEK293
Species:	Human
Sources:	Human Mesothelin protein (Accession # AAH09272.1) (Glu296-Gly580) with C-terminus His tag is expressed in HEK293 cells and conjugated to APC.
Accession Number:	Q13421
Molecular Weight:	The protein has a predicted molecular weight of 34kDa. Under DTT-reducing conditions, it migrates at approximately 35-45 kDa on SDS-PAGE prior to conjugation.
Affinity Tag:	C-His
Formulation:	1xPBS buffer, pH7.4, 0.09% NaN3 with a carrier protein
Endotoxin level:	Not tested
Protein Concentration:	25µg size is bottled at 0.1mg/mL concentration. 100 µg size is bottled at lot specific concentration.
Storage and Handling:	Briefly centrifuge the vial upon receipt. An unopened vial may be stored at 2-8°C for up to six months.

BACKGROUND INFORMATION

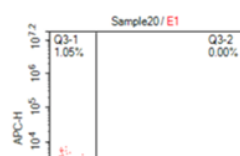
Mesothelin (MSLN), also known as CAK1, is a 70 kDa cell-surface protein cleaved into MPF (30 kDa) and mesothelin (40 kDa). MPF acts as a cytokine, while mesothelin is membrane-bound via glycosylphosphatidylinositol. It is overexpressed in various cancers, including mesotheliomas and ovarian cancer, and interacts with MUC16/CA-125, a cancer biomarker. Elevated mesothelin levels in serum make it a target for diagnostics and therapies, such as the recombinant immunotoxin SS1P, which has shown promise in clinical trials.

PRODUCT DATA

A: MSLN CAR-transfected CHO Cells



B: Mock-transfected CHO Cells



CHO cells transfected with either Mesothelin CAR or Mock plasmid were stained with APC conjugated Mesothelin (C-His) protein at 4ug_test

This product is supplied subject to the terms and conditions at www.innocyto.com/web/terms.php and may only be used as provided in the stated terms. Products are for Research Use Only.